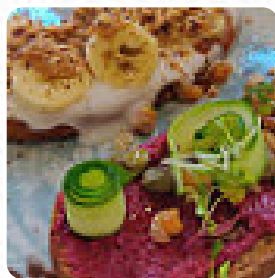




Mingle Cafe Speisekarte

<https://speisekarte.menu/>
153 Ermou, Larnaca, Cyprus, 6022
+35724209300



Mingle Cafe Speisekarte



Salads

HALLOUMI SALAD

Non alcoholic drinks

KOMBUCHA

Smoothies

SMOOTHIE

Pizza

FUSION PIZZA

Chicken

PINEAPPLE CHICKEN

Dessert

CREPES

Hot drinks

COFFEE

Restaurant Category

VEGAN

Drinks

DRINKS

SMOOTHIES

Mains



BURGER

DESSERTS

BREAD

SALAD

Ingredients

COCONUT

BUTTER

BANANA

FRUIT

PEANUT BUTTER

MILK

Mingle Cafe

153 Ermou, Larnaca, Cyprus,
6022

Öffnungszeiten:

Montag 07:30 -18:00
Dienstag 07:30 -16:00
Mittwoch 07:30 -16:00
Donnerstag 07:30 -16:00
Freitag 07:30 -16:00
Samstag 07:30 -19:00
Sonntag 07:30 -19:00

Gemacht mit [speisekarte.menu](#)

 gallery image